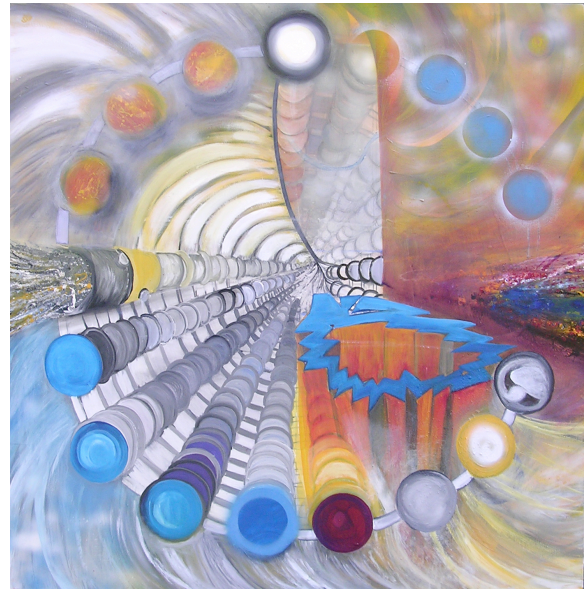


PRESS RELEASE
For Immediate Release

Emanuela Lucaci – New Work “Time”
Opening Reception – Friday, September 10, 2004, 7-9 PM



The exhibit runs through October 8th. The gallery is located at the Tula Art Center, 75 Bennett St., M2. www.naomisilvagallery.com.

***“More and more, I found myself confronted with the concept of time:
The past, the transient momentum of the present and the future...” Emanuela Lucaci***

Emanuela Lucaci was born in Oradea, Romania, she lives and works in Geneva, Switzerland and Atlanta, Georgia. She has participated in exhibits in Switzerland and throughout the United States. Her works can be found in public collections including the CERN (the European Organization for Nuclear Research in Geneva), the Romanian Embassy, Geneva Switzerland and the Romanian Cultural Center, New York, N.Y.

Lucaci was commissioned by CERN for its 50th year celebration. “I visualized my ideas about the creation of the universe in a large painting which covers the 35’ doors of the ALICE magnet situated about 100 meters under-ground at the Large Hadron Collider (LHC, the largest particle smashing machine in the world) currently under construction.

“Starting with the fluctuations before the big bang I illustrated the cycle from the big bang to our regular planet system which neighbors the initial chaos. Inspired by the beauty of the physics concepts and the visualization of elementary particle tracks traversing with the speed of light, the huge detectors I created a series of paintings with particle creation and flow. More and more I found myself confronted with the concept of time: The past, the transient momentum of the present and the future...”

Emanuela Lucaci, Geneva, Switzerland